

Summary of Agriculture Statistics for Ontario

Ontario Ministry of Agriculture, Food
and Rural Affairs

Strategic Policy Branch
1 Stone Road West, Guelph, ON N1G 4Y2

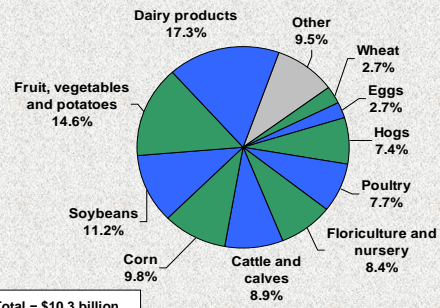
Phone: 1-888-4-OMAFRA

Fax: 519-826-3614

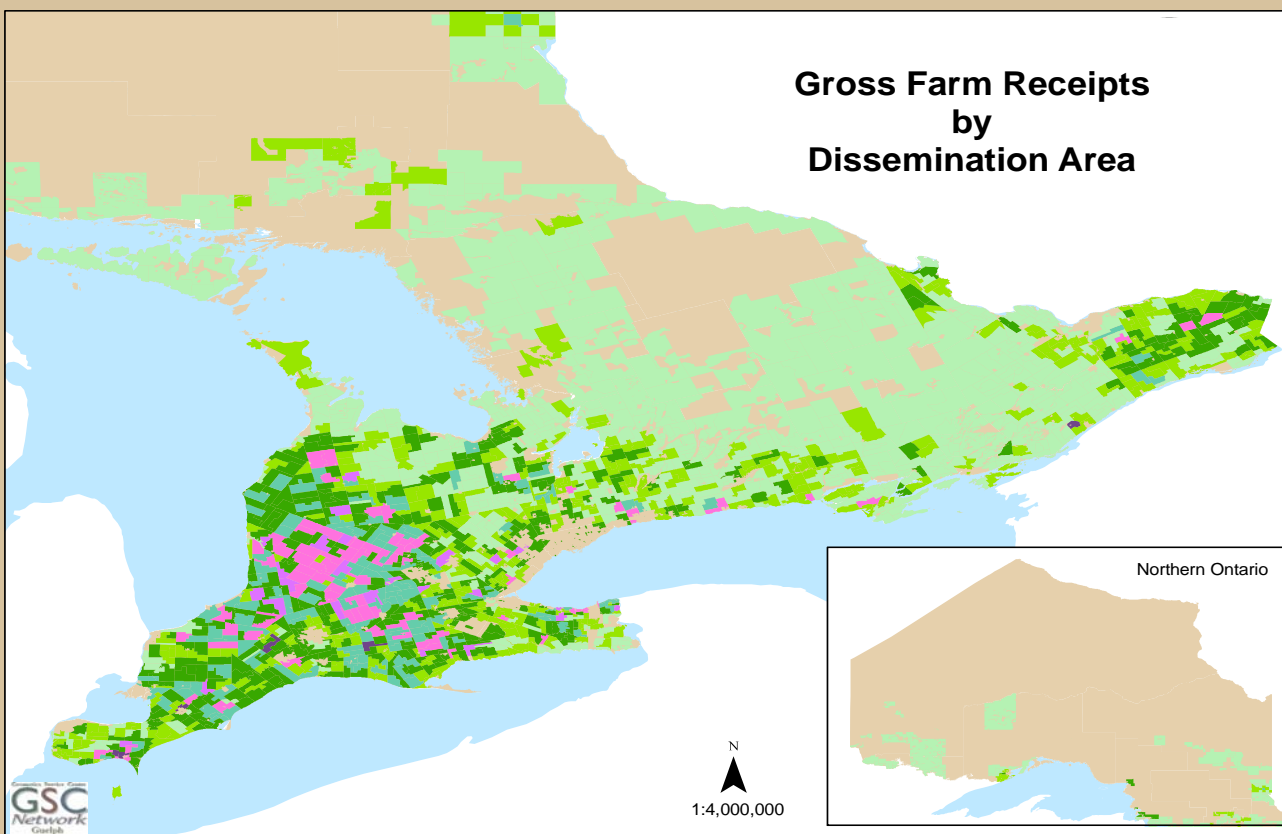
E-mail: stats@ontario.ca

<http://www.omafra.gov.on.ca/english/stats/welcome.html>

Distribution of Ontario Farm Cash Receipts by
Commodity, 2010



Gross Farm Receipts
by
Dissemination Area

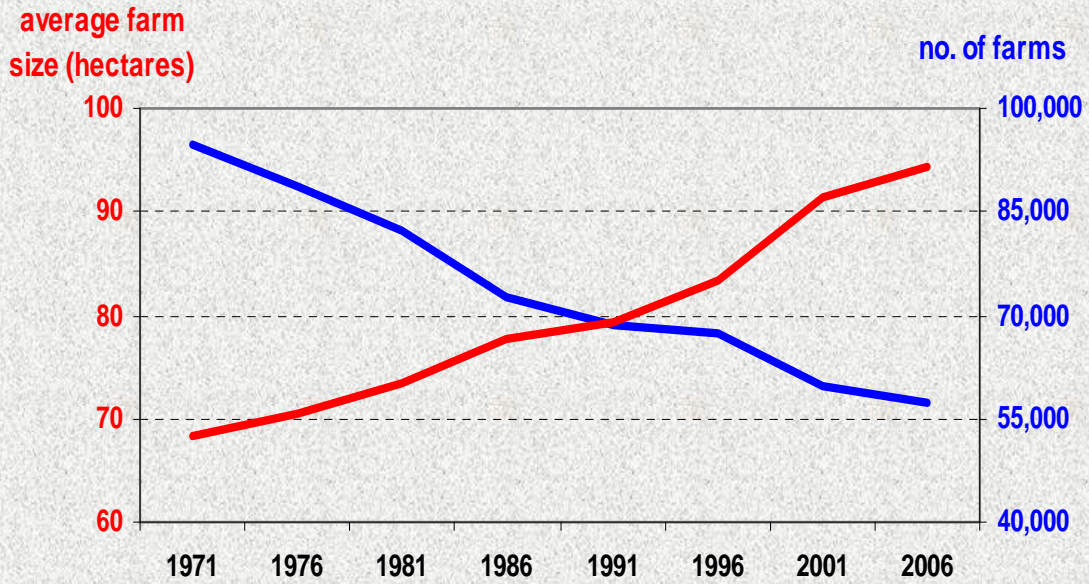


Gross Farm Receipts (Canadian Dollars \$)



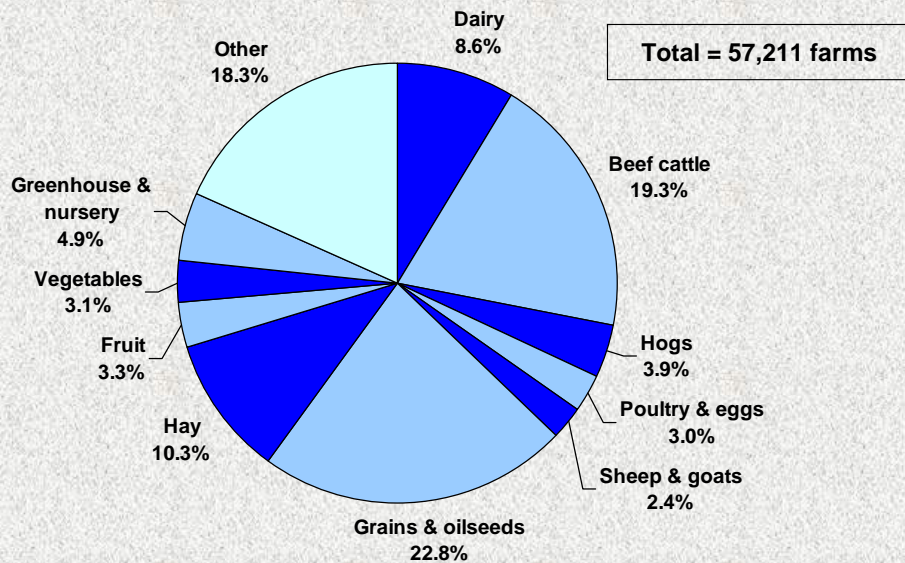
Data Source: 2001 Agriculture Census
Data, Statistics Canada

Farm Trends in Ontario, 1971 to 2006



Source: Statistics Canada, Census of Agriculture

Distribution of Ontario Census Farms by Major Product Type, 2006



Source: Statistics Canada, 2006 Census of Agriculture

STATISTICAL SUMMARY OF ONTARIO AGRICULTURE

Item	Units	Ontario
Farm Statistics, 2006 Census		
Number of farm operators	number	82,410
Total number of farms	number	57,211
Number of farms with sales over \$25,000	number	31,883
Number of farms with sales over \$100,000	number	17,965
Number of farms with sales over \$250,000	number	10,000
Farms reporting under 53 hectares	number	29,710
Farms reporting 53 to 161 hectares	number	18,648
Farms reporting 162 hectares and over	number	8,853
Total area of farms	hectares	5,386,453
Total cropland	hectares	3,660,941
Summer fallow	hectares	11,895
Pasture	hectares	753,681
Christmas tree area, woodland and wetland	hectares	750,355
All other land	hectares	209,581
Total area owned (historical basis)	hectares	3,597,531
Total area rented or crop shared (historical basis)	hectares	1,788,922
Hired Farm Labour, 2006 Census		
Farms reporting any hired labour	number	20,837
Year-round labour	weeks	1,392,257
Seasonal labour	weeks	878,920
Total labour	weeks	2,271,177
Area Grown to Major Field Crops, 2006 Census		
Hay	hectares	1,037,062
Soybeans	hectares	872,455
Grain corn	hectares	638,538
Winter wheat	hectares	416,209
Silage corn	hectares	129,807
Barley	hectares	89,447
Spring wheat	hectares	82,112
Mixed grain	hectares	70,194
Dry field beans	hectares	61,775
Oats	hectares	53,399
Fall rye	hectares	25,565
Tobacco	hectares	12,816
Canola	hectares	7,517
Number of Livestock and Poultry on Farms, 2006 Census		
Dairy cows	'000 head	330
Beef cows	'000 head	377
Steers	'000 head	312
All heifers	'000 head	414
Calves	'000 head	527
Total cattle and calves	'000 head	1,983
Sows and gilts	'000 head	418
Total pigs	'000 head	3,951
Total sheep and lambs	'000 head	311
Broilers and roasters	'000 birds	29,151
Laying hens and pullets	'000 birds	14,950
Turkeys	'000 birds	3,556
Area of Major Fruit Crops, 2006 Census		
Grapes	hectares	8,335
Apples	hectares	8,162
Peaches	hectares	3,195
Strawberries	hectares	1,717
Sour cherries	hectares	1,030
Pears	hectares	1,030

/continued

STATISTICAL SUMMARY OF ONTARIO AGRICULTURE

Item	Units	Ontario
Area of Major Fruit Crops, 2006 Census (continued)		
Plums and prunes	hectares	498
Raspberries	hectares	467
Sweet cherries	hectares	384
Area of Major Vegetable Crops, 2006 Census		
Sweet corn	hectares	15,628
Potatoes	hectares	15,441
Green peas	hectares	8,693
Tomatoes (excluding greenhouse)	hectares	8,173
Green and wax beans	hectares	4,807
Carrots	hectares	4,044
Pumpkin and squash	hectares	3,762
Dry onions	hectares	2,805
Cucumbers (excluding greenhouse)	hectares	1,678
Peppers	hectares	1,625
Broccoli	hectares	1,502
Cabbage	hectares	1,500
Asparagus	hectares	1,313
Area of Greenhouse Crops, 2006 Census		
Vegetables	'000 sq m	6,485
Flowers	'000 sq m	4,591
Machinery on Farms, 2006 Census		
Tractors	number	185,576
Combines	number	15,982
Balers	number	33,052
Farms reporting computers for farm management	number	26,260
Farm Capital Value, 2006 Census		
Market value of land and buildings	\$ million	55,912
Machinery and equipment	\$ million	7,076
Livestock and poultry	\$ million	2,349
Farm Income Statistics, 2010		
Market receipts from crops	\$ million	5,323
Market receipts from livestock and livestock products	\$ million	4,707
Total farm cash receipts	\$ million	10,316
Total operating expenses after rebates	\$ million	8,326
Net cash income (= receipts less expenses)	\$ million	1,990
Depreciation	\$ million	1,233
Income-in-kind	\$ million	9
Realized net farm income	\$ million	765
Top Commodities in terms of Market Receipts, 2010		
Dairy products	\$ million	1,780
Vegetables (including greenhouse)	\$ million	1,168
Soybeans	\$ million	1,151
Corn	\$ million	1,013
Cattle and calves	\$ million	914
Floriculture and nursery	\$ million	867
Poultry	\$ million	791
Hogs	\$ million	763
Eggs	\$ million	275
Wheat	\$ million	275
Fruit	\$ million	226
Potatoes	\$ million	114
Dry beans	\$ million	84