

9th London Swine Conference

More than 300 participants attended the ninth annual London Swine Conference, hosted at the London Convention Centre on April 1-2. This issue of Pork News and Views presents summaries of presentations prepared by OMAFRA staff. The complete proceedings can be found at www.londonswineconference.ca.

The ambitious program brought together 22 excellent speakers, informative and practical topics and the opportunity to network with a cross-section of the pork industry. The program emphasized practical pork production, from managing highly prolific sows and nursery management to grow-finisher efficiency, new market opportunities and health issues. With the knowledge that efficient production requires constant attention to details, the breakout sessions at the conference provided insights on how to achieve this goal with practical advice from industry experts and innovative frontline producers.

The speakers were impressive. The information and data were up to date and on the leading edge, which has always been a strength of the London Swine Conference. We're fortunate to be able to attract world-class experts as well as draw on our own local expertise to provide an Ontario perspective. The conference proceedings, which will be available on the conference website in May, are recognized as a valuable resource for the industry even outside of Canada.

Congratulations go out to Peter Fleuren from Elgin County, the winner of free registration to the 2010 London Swine Conference.

In This Issue:

- 9th London Swine Conference
- New Deadstock Regulations
- New NMan Software
- New Food Safety and Traceability Initiative

Planning has already begun for next year's conference, scheduled for the London Convention Centre on March 31 – April 1, 2010.

Jaydee Smith
Swine Production Systems Program Lead
519-674-1542
jaydee.smith@ontario.ca

Benchmarking and Tools to Maximize Profit

Presented by Greg Bilbrey, Agri Stats Inc Fort Wayne Indiana at the 2009 London Swine Conference.

Agri Stats is a privately held company providing professional services to the commercial livestock industries. Greg Bilbrey spoke on the how information from a swine benchmarking program can be used to identify opportunities and help improve profits.

Benchmarking is simply the act of comparing data to a contemporary group with the goal of improving performance. To be effective it must receive a committed and on going effort and the comparisons should be against those companies or (swine operations) of similar structure.

One benefit of benchmarking is that it contributes to the ability to see outside personal or professional practices. The term "paradigm blindness" refers to the situation when an individual or business becomes so focus on or entrenched in the operation of their respective activities, they fail to see what is going on outside their world. This blindness may be a source of stagnation and an impediment to progress.

Benchmarking allows visualization of what individual, companies and/or competitors are doing and how one compares to them. Effective benchmarking breaks this paradigm blindness and leads to creation of practices or processes that improve per-

formance. In swine operations benchmarking can range from simple production comparisons to elaborate and sophisticated total production and financial comparisons. Each and every commercial swine operation is encouraged to participate in some benchmarking effort.

In the current swine industry, much discussion is given to the maximization of performance in specific production variable such as pigs per mated sow per year, ADG, FC. Efforts to improve performance in each area of production is important and necessary for growth, yet including only production measurements can lead to ineffective efforts and may create a level of "paradigm blindness". Some measurements of cost and or financial performance should also be included. We must remember the ultimate goal is increasing the profitability – not simply increasing the production level.

It should be clear that benchmarking can help identify opportunities and focus efforts on the opportunities with the greatest economic gain. Though all producers may not be a member of a large benchmarking company like Agri Stats, producer groups could design their own or seek out other companies providing similar services. In these challenging economic times each producer must capitalize on opportunities to increase efficiency, lower cost and improve profit.

Summarized by Douglas Richards
Swine Grower Finisher Specialist
doug.richards@ontario.ca
519-482-3133

Nursery Pig Management

Presented by Peter Wilcock, Associated British Nutrition – Primary Diets – AB Agri Ltd. at the 2009 London Swine Conference.

Peter Wilcock gave a very complete and thorough presentation on Fine Tuning

Swine Budget – April 2009

Income (\$/pig)	Farrow To Wean	Nursery	Grow-Finish	Farrow To Finish
* Market Pig @ \$131.29/ckg, 109.26 index, 92.95 kg				\$133.33

Variable Costs (\$/pig)

* Breeding Herd Feed @ 1,100 kg/sow	\$15.25			\$16.70
* Nursery Feed @ 32.6 kg/pig		\$13.95		\$14.61
* Grower-Finisher Feed @ 254 kg/pig			\$73.02	\$73.02
* Net Replacement Cost for Gilts	\$1.68			\$1.84
* Health	\$1.96	\$2.57	\$1.75	\$6.59
* Breeding (AI & Supplies)	\$1.41			\$1.54
* Marketing			\$3.56	\$3.56
* Utilities (Hydro, Gas)	\$1.96	\$1.30	\$1.52	\$5.02
* Miscellaneous	\$0.45	\$0.15	\$0.35	\$1.00
* Manure Disposal	\$0.83	\$0.33	\$1.13	\$2.39
* Repairs & Maintenance	\$0.70	\$0.35	\$1.13	\$2.27
* Labour	\$6.96	\$1.85	\$4.00	\$13.55
* Operating Loan Interest	\$0.36	\$0.34	\$0.62	\$1.38
Total Variable Costs	\$31.55	\$20.84	\$87.08	\$143.48

Fixed Costs (\$/pig)

* Depreciation	\$3.48	\$1.77	\$5.67	\$11.33
* Interest	\$2.23	\$1.13	\$3.63	\$7.25
* Taxes & Insurance	\$0.70	\$0.35	\$1.13	\$2.27
Total Fixed Costs	\$6.40	\$3.26	\$10.43	\$20.85

Summary of Costs (\$/pig)

* Feed	\$15.25	\$13.95	\$73.02	\$104.33
* Other Variable	\$16.30	\$6.90	\$14.07	\$39.15
* Fixed	\$6.40	\$3.26	\$10.43	\$20.85
Total Variable & Fixed Costs	\$37.95	\$24.10	\$97.51	\$164.32

Summary

Net Return Farrow to Finish (\$/pig)				-\$30.99
Farrow to Weaned Pig Cost (\$/pig)	\$37.95			
Farrow to Feeder Pig Cost (\$/pig)		\$63.77		
Wean to Finish Cost (\$/pig)			\$122.76	
Farrow to Finish Breakeven Price (\$/ckg, 100 index)				\$161.80

This is the estimated accumulated cost for a market hog sold during the month of April 2009. The farrow to wean phase estimates the weaned pig cost for November 2008 and the nursery phase estimates the feeder pig cost for January 2009.

For further details, refer to the "2009 Budget Notes" posted at <http://www.omafra.gov.on.ca/english/livestock/swine/finmark.html>

Nursery Management to Optimize Production Costs. The presentation is its entirety is very complete and thorough and deals with the whole spectrum of Nursery Management. In this article, we are constrained by the space available and so have chosen to summarize his comments only as they apply to feed. The rest of the paper is very wide in scope and well worth reading. However, feed was selected because of its significant cost factors associated with pork production.

Feed can assist in many units with overcoming some of the management issues, but a combination of the correct feed, feed program and good management is the best chance of successful pork production.

Creep Feeding

In his discussions on creep feeding, Wilcock covers the traditional areas of benefits vs age vs costs but comes to the sound conclusions that significant benefits accrued to pigs that were offered creep feed, and that in fact they did eat the creep feed (see accompanying article, "Nursery Improvement - Practical Tips").

Considerations were given to offering creep feed at seven days instead of fourteen days of age lead to a 10% increase in number of pigs consuming creep by weaning age. The complexity of the creep feed was also looked at and work by Frazer (1994) showed that increased complexity of the diet increased the creep feed consumption of the piglets which improved post-weaning growth.

Creep feeder type has a significant effect on feed consumption and percentage of piglets consuming food. Sulabo et al (2008) examined three types of creep feeders and showed that one particular feeder type increased the percentage of pigs consuming creep by approximately 30% when compared to other feeders. The studies showed that creep fed piglets improved gain by an average 11.25% at approximately 30 days post weaning. This advantage in performance can be achieved through focusing on creep feeding and using management to stimulate creep feed intake.

In his discussions on feed quality he explored a number of feeding trials and drew the conclusion that complex diets show significant improvements in pig performance. Among the results observed is the fact that reduced variation in nursery out-weights and the reduction of poor pigs in the nursery is a definite advantage.

Gruel Feeding

Gruel feeding is typically used with piglets up to five days past weaning to be fed alongside traditional dry feed. It should not be fed longer as it will lead to pigs having difficulty in using the dry feeder. This rule may be excepted in hospital pens, where it is typically fed three times daily. It is important to use higher sanitation levels for gruel feeding equipment since it is a system which quickly allows bacterial growth and development. In management practices after feeding the pig with a syringe, it should be returned to the pen, as close as possible to the feeder, so the animal will associate the feeding process with the feeder and improve the opportunity of self feeding.

Feed Program

The benefits of a feed program are simple. The object is not to underfeed the pig and loose performance or overfeed the pig with higher cost diets than needed. An example from the Prairie Swine Centre (Whittington et al 2005), showed that underfeeding phase 1 and phase 2 feeds by 5kg. (approximately) resulted in pigs being 4.5kg behind the nursery exit weight. Correcting the program resulted in exit weights that were now just 0.8kg behind target. When the numbers were crunched on this correction there was found to be an increase in profit of \$1.85 per pig, even after feed costs were corrected.

This brief summary in no way does justice to the complete paper and it is suggested that you read it from the proceedings either on line or in published material. It is also important to work with your feed suppliers and nutritionists to obtain the greatest advantage available to you from your feeding program.

*Summarized by Ed Barrie,
Sow Weaner Pig Specialist
519-271-6280
ed.barrie@ontario.ca*

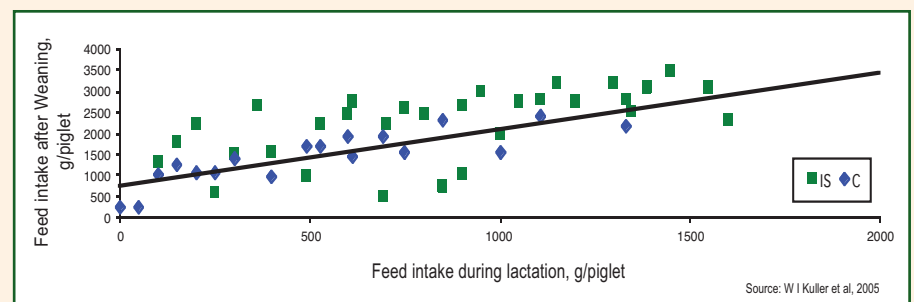
Nursery Improvement - Practical Tips

Presented by Peter Wilcock, Associated British Nutrition – Primary Diets – AB Agri Ltd. at the 2009 London Swine Conference.

Creep feeding has become increasingly important with increased litter size and later weaning. Although creep feeding is a significant component in improving weaning weights, especially in later weaned piglets, it is also a key tool in improving post weaning performance. A trial by Kuller et. al. (2005) demonstrated that the more creep feed a pig eats the better the post weaning feed intake and potentially can eliminate post-weaning lag (Figure 1, below).

However, simply providing creep is not the whole answer. A US research study by Sulabo et. al. (2008) showed that pigs that ate creep had an extra 0.4 kg gain over pigs that were non eaters or not offered creep. In addition, of the litters that were offered creep only 60% of the piglets actually ate it. As producers it is important to manage creep feeding to maximize the number of

Figure 1. Creep feeding increases post-weaning feed intakes.



piglets that consume creep. One management tool that the researchers looked at was introducing creep feed at day 7 versus day 14 of lactation. The results showed an extra 10% of pigs consumed creep feed when it was introduced earlier (Figure 2).

Figure 2. The effect of creep feeding on post-weaning gain.



Other management tips for maximizing creep intake include:

- Keep the feed fresh and clean
- In late weaned piglets > 24 days start creep feeding at 10-14 days
- In early weaned piglets < 24 days start creep feeding at 5 to 7 days
- Offer creep feed on a flat surface (solid floor or shallow tray)
- Place creep close to pigs but not under heat source
- Keep feed away from muck area
- Start with small amounts and replace at least twice per day (remove uneaten creep)
- Offer creep when sow is feeding as baby pigs are active and will not get suckled for some time
- Do NOT overfeed – feed to appetite
- Introduce small troughs or top up trays if litters eating well
- Thoroughly clean fouled trays
- Improve water availability as this will increase feed intake
- Maintain freshness by storing creep diet in cool place and always roll down the top of the bag to prevent unit odor being taken into feed
- Remember if creep is being consumed it STILL does not mean all pigs are consuming creep
- Use gruel feeding when needed to increase intake
- Use high digestible starter feed

With a few assumptions the economics of feeding creep feed look like this:

Assumptions:

Average piglet intake over 21 day lactation	100 g
Pigs per litter	10
Creep feed cost	\$ 2000/tonne

Cost of Creep Feeding:

10 pigs x 100 g/pig = 1.0 kg creep x \$2000/tonne = \$2.00 per litter

Focusing on creep feeding and maximizing the number of piglets per litter that consume creep can improve both pig performance and financial return.

References

Kuller, W.I., N.M. Soede, H.M.G. van Beers-Schreurs, P Langendijk, M.A.M Taverne, J.H.M Verheijden, and B. Kemp. 2004. J. Anim. Sci. 82: 405-413
 Sulabo, R.C., M.D. Tokach, J.Y. Nelssen, S.S. Dritz, J.M. DeRouchey, and R.D. Goodband. Effects of lactation feed intake and creep feeding on sow and piglet performance. 2008. J. Anim. Sci. 86 (suppl. 31): 98 (abs.).

*Summarized by Greg Simpson, Swine Nutritionist
 greg.simpson@ontario.ca
 519-846-3401*

Cost Benefit of Vaccines and Medication – Nickels and Dimes?

Presented by Dr. Greg Wideman at the 2009 London Swine Conference.

Recently, low market prices have resulted in Ontario producers applying increasing focus to input costs. Although not one of the major cost centres in swine production (health-related costs per pig for a typical farrow-to-finish farm in Ontario have been estimated at 4.5% of the total cost of production), there are opportunities to review and reduce costs. Much of the variation in health cost among farms is due to differences in productivity, health status, and business goals, but, in addition, costs may also vary because a critical review of health spending has not been undertaken.

Some questions to ask your veterinarian:

Is there a lower-cost alternative product?

There is a wide range in the cost of commercial swine vaccines. Efficacy comparisons of vaccines, when available, are not usually based on randomized clinical trials and comparisons are equivocal regarding the real economic differences between vaccines. However, on some farms, for some diseases, changing to a lower-cost vaccine is an option, especially if the disease challenge is low. With regard to treatment options, selecting a lower cost injectable antibiotic as the primary treatment can significantly reduce cost, especially in disease-challenged finishing herds. Of course, these decisions should always be made carefully, in consultation with the herd veterinarian.

Where is the best value for my animal health spending?

Improvements in pig health and performance have been significant with the widespread use of porcine circovirus vaccines. The cost benefit ratio for PCV2 vaccine use is positive, even for farms with minimal evidence of clinical disease. There does not appear to be a standard approach to PCV2 vaccine protocols; there are significant differences between commercial products which make vaccine selection a critical point at which a producer needs to involve his/her veterinarian.

With regard to feed antibiotics, feed budgets should be reviewed on a routine basis to minimize cost without impacting productivity. A simple spreadsheet can assist in guiding feed medication decisions as feed prices change.

What should I be spending on veterinary inputs?

Veterinary costs should be routinely reviewed in order to ensure that:

1. The volume of purchases correlates to pig inventory (i.e., doses of iron purchased versus number of pigs born).
2. Ineffective, costly products are removed from the farm's animal health plan.

3. Opportunities to add value through new health products are explored.
4. Health care cost per pig is in line with other similar production units (i.e. benchmarking).

This review can be conveniently incorporated into the CQA validation process, when producers and veterinarian are already reviewing animal health products from the food safety perspective.

There are opportunities to reduce veterinary costs in most swine operations; however changes need to be evaluated carefully since any change that reduces productivity will cause costs to increase.

*Summarized by Janet Alsop, Veterinarian Disease Prevention – Swine
janet.alsop@ontario.ca 519-846-3420*

Designing Field Trials to Compare Vaccines or Antibiotics

Presented by Dr. Cate Dewey at the 2009 London Swine Conference.

Maintaining healthy pigs, improving productivity, and minimizing the effects of disease through the use of effective management procedures or pharmaceuticals (vaccines and antimicrobials) are important. Field trials conducted on commercial farms are a useful way of testing the ability of a new product to improve production or to decrease illness and death.

Pigs should be allocated to treatment groups using a formal random process, which means that each pig in the trial has the same chance of being selected to be in either the treatment or control (untreated or standard treatment) group. It is essential to have control pigs in order to determine the difference in health and production between the treated pigs and the untreated pigs that are present in the barn at the same point in time. When there are no controls, performance can only be compared to historical data.

Ideally, the people working in the barn will be 'blind', i.e. they will not know which pigs received which treatment, so they will not care for the pigs differently.

The experimental unit is the smallest independent group of pigs that can be assigned to a treatment group. With vaccines or injectable antibiotics, the experimental unit is usually the pig. If the treatment cannot be randomly assigned to an individual pig, for example with feed trials, then the calculations will be based on pens of pigs rather than individual pigs.

The treatment should be randomly assigned to pens of pigs and the growth rate should be compared on a per pen basis. In order to reduce the total number of pigs required, the number of pens can be increased and the number of pigs per pen decreased.

In order for a field trial to be valid, the observed association between the treatment and the outcome must be due to the treatment and not the result of chance or bias. Bias is a systematic error in measurement or a systematic difference between groups. Random assignment of pigs should remove bias. Thus there will be no association between the weight of the pigs and any other factor.

In order to determine whether or not there is a significant difference between two groups, the number of pigs must be large enough to measure the expected difference. Sample size equations can be used to determine the number of pigs needed. A sample that is too small will result in finding no difference between the groups when a difference does exist. A sample that is too large is expensive. The sample size is determined by how variable the outcome (ADG or death rate) is expected to be, the expected difference between treatment and control groups, and how confident one wants to be of the results (usually set at a 95% level).

At the completion of the trial, statistical tests are used to determine if there was a significant difference in performance

between the treated and control groups. The trial should be repeated over time to ensure that the results are consistent.

*Summarized by Janet Alsop, Veterinarian Disease Prevention – Swine
janet.alsop@ontario.ca 519-846-3420*

Practical Management of the Transition to Batch Farrowing

Presented by Dennis Aarts at the 2009 London Swine Conference.

Mr. Aarts, who farms in Oxford County, provided a producer's perspective on batch farrowing based on his experience. In his paper, he begins by describing the positive aspects of batch farrowing:

- Grouping larger numbers of piglets together
- Time management efficiencies
- Increase in monitored farrowings
- Specialized labour sharing and scheduling

All of these advantages come with some management challenges, of course. Managing the transition of gilts, repeats and open sows into one of the batches is a key challenge. Hormonal regulation of the breeding cycle has a cost, and generally increases non-productive sow days. Batch farrowing requires batch breeding; there may be a need for changes to facilities in order to accommodate breeding more sows at once.

Common batch lengths are 2, 3, or 4 weeks, depending on target weaning age and other factors. It is easier to make the adjustment if extra farrowing stalls are available, such as during a reduction in herd size. This allows leaving some pigs on the sow for a while longer, then weaning them along with some a bit earlier than normal in order to create a batch. Otherwise, delaying estrus hormonally will be necessary. Since some sows won't fit into a batch, a few farrowing stalls in excess of targets should be kept aside to accommodate these.

Batch farrowing requires a different form of management and some new techniques,

but can offer significant advantages. For an overview of the hormonal control of reproduction see "Hormonal Control of Pig Reproduction" by Dr. Glen Cassar, University of Guelph, also in the LSC 2009 Proceedings.

*Summarized by Jaydee Smith
Swine Production Systems Program Lead
519-674-1542
jaydee.smith@ontario.ca*

New On-Farm Dead Animal Disposal Regulations In Ontario

Ontario farmers have more choices to safely dispose of their deadstock under new regulations that came into effect on Friday, March 27, 2009. The Dead Animal Disposal Act (1968) was replaced by the Disposal of Dead Farm Animals regulation under the Nutrient Management Act (NMA) and the Disposal of Deadstock regulation under the Food Safety and Quality Act (FSQA).

The new regulations, developed in consultation with the Ministry of the Environment (MOE) and industry partners, also provide greater flexibility for the deadstock service sector and include measures that will protect the environment. Key changes include:

- Giving farmers and deadstock receivers a wider range of choices for disposing of deadstock both on and off the farm, such as anaerobic digestion and central composting
- Including poultry and other farmed animals not covered under the old legislation
- Establishing enhanced environmental standards that will protect our water resources, with additional requirements that safeguard animal health and public health protection.

The Disposal of Dead Farm Animals regulation under the NMA applies to all farm operations, regardless of size or the requirement to have a nutrient

management strategy or plan. The regulation applies to the disposal of cattle, goats, sheep, horses, swine, deer, elk, alpacas, llamas, bison, yaks, donkeys, ponies, rabbits, poultry and fowl, ratites, and fur bearing animals.

Disposal Options

Additional disposal options offer greater flexibility to manage deadstock on the farm.

They include:

- Burial
- Incineration
- Composting
- Disposal vessels
- Collection by a licensed collector
- Anaerobic digestion
- Delivery to a waste disposal site approved under the Environmental Protection Act (EPA)
- Delivery to a disposal facility as defined under the FSQA
- Delivery to a licensed veterinarian for post mortem and disposal.

The operator of the farm is responsible for disposing of the animal within 48 hours of its death. However, two exceptions exist to this rule:

- If a delay occurs in order to perform a post mortem on the animal
- If the animal is put into temporary storage conditions as specified in the regulation.

If an operator chooses to bury, incinerate, or compost deadstock, the regulation establishes requirements to minimize impacts on the environment. This includes minimum separation distances from:

- Neighbouring livestock housing facilities
- Field drainage tiles
- Residential and commercial lands
- Surface water
- Bedrock and aquifers
- Wells including municipal wells and floodplains.

For each disposal option, there are specific operating requirements that producers will have to meet. In some cases, there are limitations on the volume of deadstock being disposed.

Transportation

The transportation requirements under the regulation state that a farm operator may transport his/her own deadstock to:

- A common bin or collection point for collection by a licensed deadstock collector
- A veterinarian for the purposes of a post mortem
- Another farm for disposal if he/she owns the property where the disposal will take place
- A site approved to receive these materials under the EPA or the FSQA
- Anaerobic digesters approved and operating under NMA and EPA.

During transport, the deadstock must be kept out of public view, and in a container designed or equipped to prevent leakage. Also, each surface that comes into contact with the deadstock must be impervious and capable of being cleaned and sanitized.

Producers should also be aware of federal rules regarding the transport of cattle as they cannot be moved without a federal Special Risk Material (SRM) permit.

Record Keeping

The operator is required to maintain records for two years for all methods of disposal. The records must include documentation that demonstrates compliance with the regulation.

Records include:

- Species, age, weight of the animal
- Date, time and cause of the animal's death if known
- Date, time, method and place of the animal's disposal
- Date record is made.

Also, if an animal is disposed of by incineration, a record of the temperatures in the incinerator combustion chambers must be recorded at all times during the incineration.

Emergency Conditions

Provisions for emergency conditions exist when an operator cannot comply with the NMA requirements with respect to storage,

disposal or transportation of dead farm animals (e.g. a barn fire, tornado, disease, etc.). The regulation allows the operator to apply to OMAFRA for approval to arrange for storage, disposal, or transportation that would not otherwise meet the requirements of the regulation. Each case will be assessed individually. OMAFRA's final decision will weigh the circumstances against the potential threat to the environment from an alternate method of disposal. This article is not a description of all the requirements contained in the regulations. The regulations must be read to determine all such requirements.

For more information on the deadstock regulations, please visit <http://www.omafra.gov.on.ca/english/livestock/deadstock/index.html>.

This site includes a link to the regulations. In addition to the information on the website, OMAFRA and MOE are developing a Best Management Practice Manual to assist producers with decisions on managing deadstock.

*Phyllis MacMaster,
Environmental Specialist
(613) 258-8297
phyllis.macmaster@ontario.ca*

Nutrient Management Software Updated

A NEW VERSION OF THE NMAN COMPUTER PROGRAM IS AVAILABLE FOR DOWNLOAD.

NMAN is OMAFRA's nutrient management planning software. This enhanced version of NMAN has improved its user interface and its flexibility.

What's new in NMAN 2.1?

- New Nutrient Balance Interface. Uses a one-window approach when performing Agronomic and Crop Removal Balances
- Improved visuals including a complete list of livestock and storage images.
- Improved printouts. A revamped layout that includes the newly added livestock and storage images.

- A new printout to handle Registrations required under the Nutrient Management Act.
- New Start Page, which enables users to access previously saved projects upon start up.

Please be aware that due to the improvements to the software the file available for download has increased in size (85 MB). A downloadable version can be found at the following website:

<http://www.omafra.gov.on.ca/english/nm/nman/software.htm>

*Andrew Jamieson
Water Management Engineer
519-846-3390
andrew.jamieson@ontario.ca*

COP and Shipping Strategies: Essential Business Tools

Do you know your Cost of Production? Are you on the right Grading Grid?

Working out the details of your cost of production can be a challenging task but is essential for farm management and decision-making. Visit the OMAFRA display at the Ontario Pork Congress (June 24 & 25) for information on OMAFRA's swine enterprise budgets, and to talk to our specialists about how to develop your own budget to track your operation's performance and profitability.

At OPC Carcass Education display, the Canadian Centre for Swine Improvement (CCSI) will be demonstrating software to show how you may have fared on a different grading grid or with a different shipping strategy. Be sure to bring your producer number to be able to analyze your own data from the OINK online database. This is unbiased and free advice – don't miss it.

*Jaydee Smith
Swine Production Systems Program Lead
519-674-1542
jaydee.smith@ontario.ca*

The Food Safety and Traceability Initiative (FSTI)

Ontario food producers and food processors are increasingly aware of the constant need to improve food safety and traceability within their operations. This will strengthen Ontario's ability to provide safe, high quality food and provide economic advantages to our farmers and food processors.

The FSTI provides cost-share funding to individual facilities to support the implementation of written food safety programs and working traceability systems through the purchase and installation of equipment, the certification of recognized food safety programs and/or the training of employees.

The FSTI is part of the Best Practices suite of Growing Forward, a federal-provincial-territorial initiative. Growing Forward supports best practices in four key areas: environment and climate change; food safety and traceability; business development; and biosecurity. Participants are encouraged to develop strategies across all these areas to meet their business goals through a variety of information sessions and workshops, as well as one-on-one training and technical assistance.

For more information on Growing Forward, please visit www.ontario.ca/growingforward.

For more information specifically about the FSTI, or to obtain an application and apply online, please visit www.ontario.ca/foodsafety.

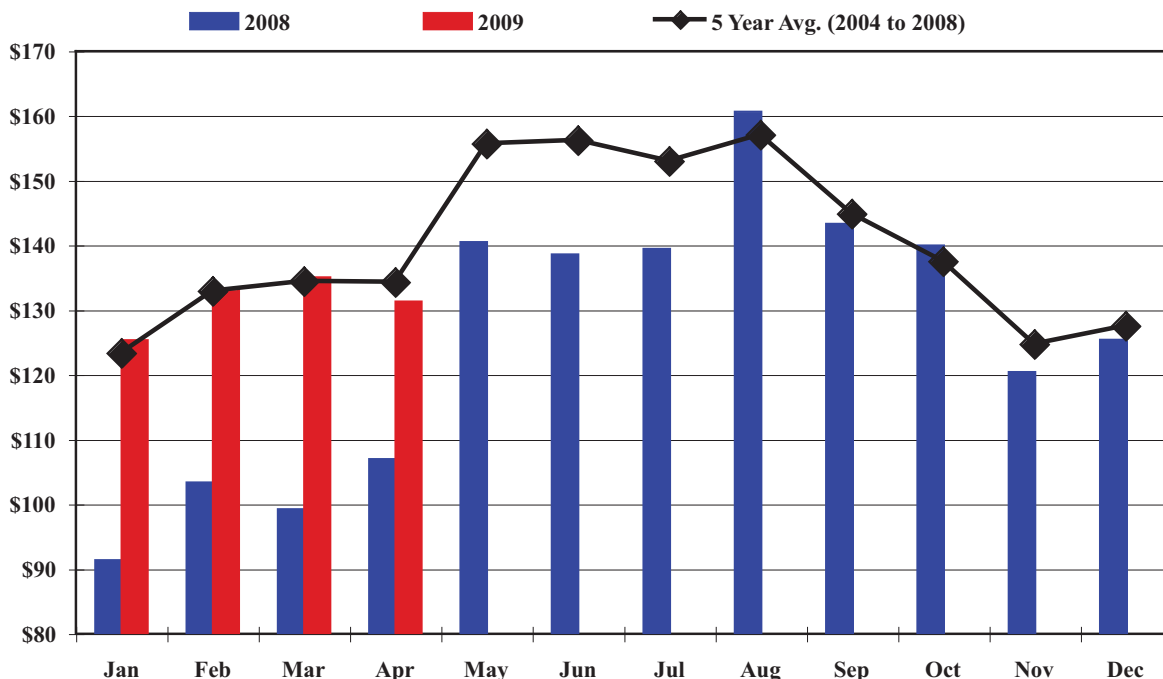
Questions about the FSTI application process may be directed by:

- Emailing to FSTI.omafra@ontario.ca or
- Calling 1-888-479-3931 (1-888-GRWFW1D1)

Producers who are currently on the Canadian Quality Assurance program are eligible to apply.

*Sbannon Nguyen
Food Safety Program Assessment Specialist
519-826-6596
sbannon.nguyen@ontario.ca*

Ontario Monthly Average Market Price (C\$/ckg, 100 index)



Data Source: Ontario Pork Market Information

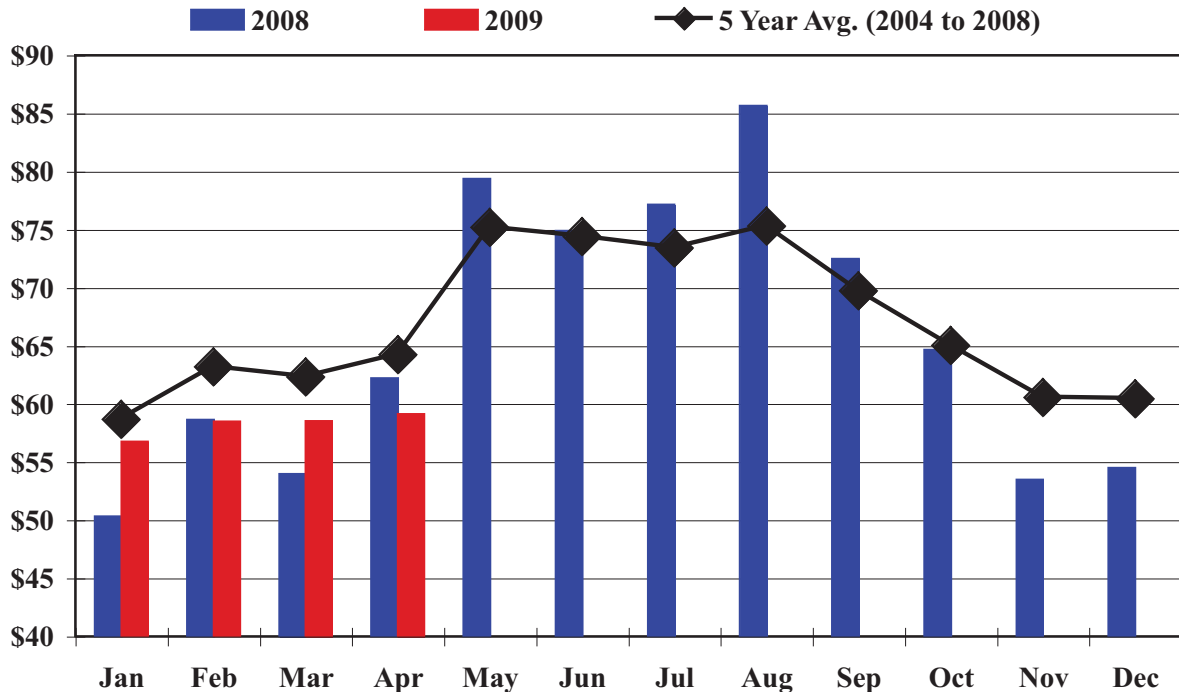
The above graph compares the average monthly calculated Ontario market hog price for 2009 versus 2008 and the 5 year average for 2004 to 2008. As of the end of

April 2009, the average Ontario price was \$130.84 versus \$100.40 as of the end of April 2008. The five year average (2004 to 2008) Ontario market hog price is

\$140.50/ckg, 100 index. The Canadian dollar value as of the end of April 2009 was 80.6 cents versus 99.4 cents as of the end of April 2008.

Ontario Market	Nov '08	Dec '08	Jan '09	Feb '09	Mar '09	Apr '09
Avg. Weighted Price (\$/ckg, 100 index)	\$120.41	\$125.37	\$125.33	\$133.12	\$135.01	\$131.29
* Same Month - Previous year	\$89.65	\$97.90	\$91.30	\$103.32	\$99.21	\$107.00
Pool Price (\$/ckg, 100 index)	\$108.16	\$113.68	\$117.91	\$123.45	\$132.69	\$132.75
Pool Plus Price (\$/ckg, 100 index)	\$115.96	\$121.04	\$121.75	\$130.44	\$132.83	\$128.55
Ontario Market Hog Sales	419,300	357,964	515,432	401,970	385,838	372,382
* % of Same Month - Previous Year	89%	88%	109%	72%	90%	86%
Average Carcass Weight (kg)	92.92	92.54	94.07	93.06	92.86	92.95
Average Market Index	109.06	109.27	108.85	109.17	109.27	109.26
*Ontario Market Hog Sales - Feb.'08 & Jan.'09 are for 5 weeks versus 4 weeks in Jan.'08 & Feb.'09						
Weaned Pigs (\$/pig, 5 kg)**Formula	\$30.60	\$31.82	\$32.13	\$34.25	\$34.71	\$33.69
Feeder Pigs (\$/pig, 25 kg)**Formula	\$48.54	\$50.48	\$50.97	\$54.34	\$55.08	\$53.45
** Weaned Pig Formula is 26% of the 100% Formula Price and the Feeder Pig Formula is 1.65 times 100% Formula Price times 25 kg.						
Corn (farm price) - \$/tonne	\$161.04	\$165.72	\$173.17	\$164.26	\$173.77	\$175.13
* Same Month - Previous year	\$140.68	\$155.55	\$170.12	\$177.03	\$188.51	\$208.06
Soybean Meal (Hamilton + \$20)-\$/tonne	\$404.40	\$414.84	\$490.47	\$462.95	\$456.70	\$482.02
* Same Month - Previous year	\$357.88	\$403.75	\$421.48	\$435.96	\$419.33	\$431.12
Corn - Western Ontario Feed - \$/tonne	\$175.61	\$178.52	\$185.73	\$176.81	\$187.40	\$188.62
* Same Month - Previous year	\$157.61	\$170.85	\$185.93	\$191.56	\$202.60	\$221.62
Value of Canadian Dollar	\$0.8217	\$0.8102	\$0.8159	\$0.8031	\$0.7905	\$0.8123
* Same Month - Previous year	\$1.0330	\$0.9977	\$0.9889	\$1.0008	\$1.0019	\$0.9855
Prime Interest Rate at End of Month	4.00%	3.50%	3.00%	3.00%	2.50%	2.25%

Ontario - U.S. Monthly Average Reference Price (US\$/cwt.)



Data Source: http://www.ams.usda.gov/mnreports/lm_hg201.txt

This graph shows the U.S. reference price that is used in the base formula to determine the Ontario market hog contract prices. As of the end of April 2009, the average U.S. reference price

was \$58.21 versus \$56.20 as of the end of April 2008. The data source for the U.S. reference price has changed at various times. Currently (since May 2003) the CME constructed price is

used as the U.S. reference price which is calculated from the daily LM-HG201 USDA report. The five year average (2004 to 2008) U.S. reference price is \$66.87.

U.S. Market	Nov '08	Dec '08	Jan '09	Feb '09	Mar '09	Apr '09
Commercial Hog Slaughter '000 Hd	9,325.0	10,144.6	9,922.3	8,913.2	9,652.8	
* % of Same Month - Previous Year	93%	105%	94%	95%	100%	
Number of Sows Slaughtered '000 Hd	247	271	267	238	267	
* % of Same Month - Previous Year	85%	103%	88%	88%	89%	
Early Weaned Pigs (US \$/Pig)	\$38.46	\$42.79	\$42.65	\$38.60	\$37.41	\$35.93
* Same Month - Previous year	\$34.26	\$36.37	\$36.88	\$37.25	\$34.68	\$29.69
40 Pound Feeder Pigs (US \$/pig)	\$47.56	\$54.85	\$61.22	\$58.66	\$60.94	\$61.30
* Same Month - Previous year	\$38.79	\$41.12	\$43.45	\$47.38	\$46.39	\$35.87
CME Constructed Price (US\$/cwt)	\$53.48	\$54.49	\$56.73	\$58.48	\$58.52	\$59.12
* Same Month - Previous year	\$50.30	\$53.76	\$50.31	\$58.63	\$53.95	\$62.18
Pork Carcass Cutout Value (US\$/cwt)	\$57.26	\$58.82	\$57.09	\$57.25	\$57.80	\$58.73
* Same Month - Previous year	\$58.78	\$58.69	\$56.53	\$61.39	\$57.45	\$65.55
Retail Price (US\$/lb)	\$3.00	\$3.01	\$3.00	\$2.96	\$2.94	
* Same Month - Previous year	\$2.86	\$2.86	\$2.86	\$2.83	\$2.83	\$2.86
Pork Production**	-7.8%	4.0%	-6.1%	-4.6%	0.4%	
Pork In Cold Storage**	11.0%	21.1%	5.6%	2.1%	-9.8%	
Pork Exports**	0%	3%	-10%	-15%		
Feeder Pig Imports**	-12%	-12%	-38%	-53%		
Market Pig Imports**	-64%	-58%	-205%	-195%		

** % change from same month in the previous year