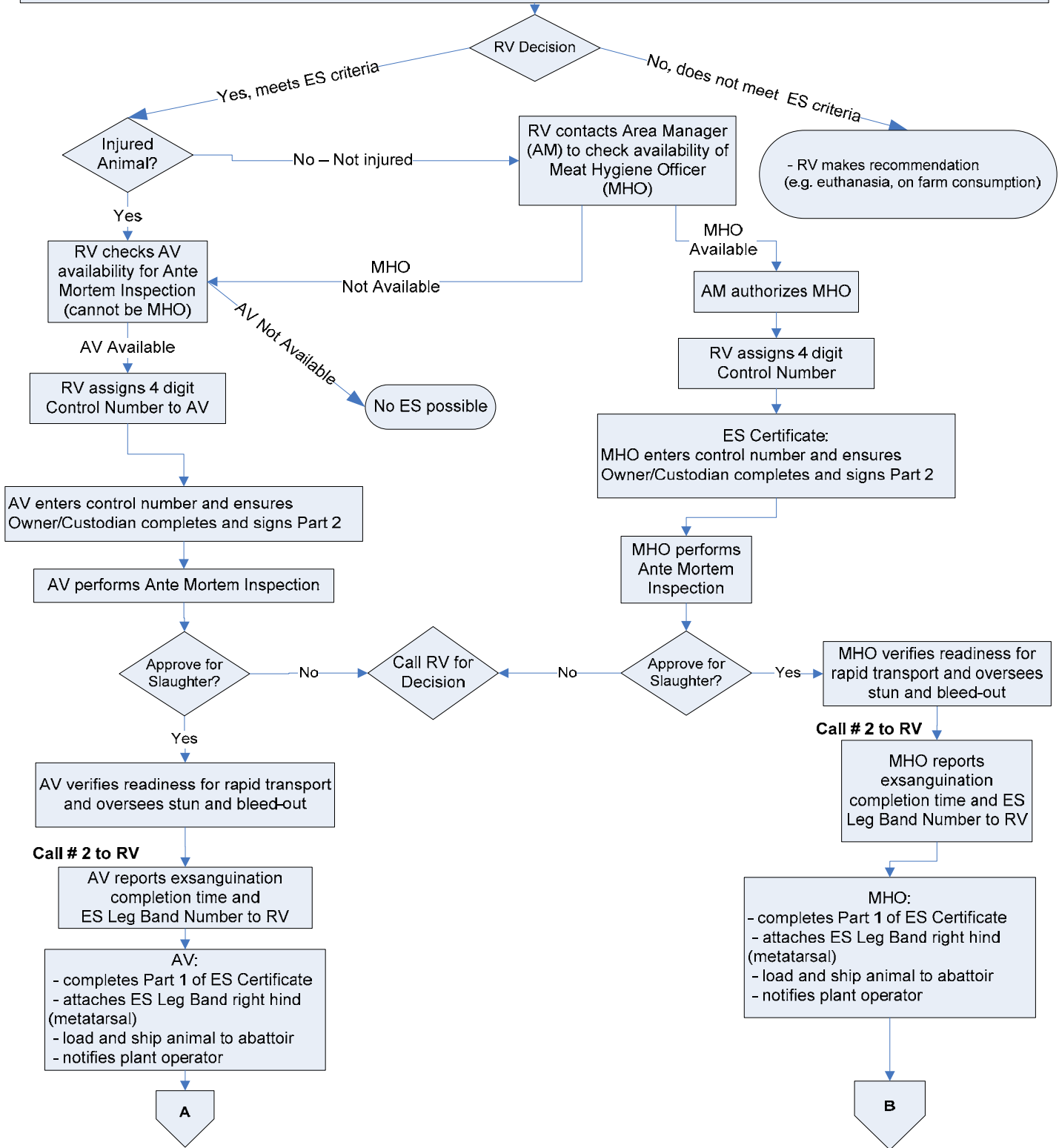


Emergency Slaughter Decision Tree – On Farm/Off Site – September 2007

Call # 1 to RV (Page: 1-800-263-1420)

Plant Operator or Appointed Veterinarian (AV) calls Regional Veterinarian (RV) for Emergency Slaughter (ES)

1. RV determines eligibility for ES: Injured but healthy, Dangerous animal, Escaped animal; CFIA SRM Permit to Transport and Receive SRM
2. RV Explains costs to operator and operator agrees to be responsible.
3. RV explains that ES is subject to availability of inspector.



Continued on page 2

Emergency Slaughter Decision Tree – Abattoir Site - October 2006

Continued from page 1

