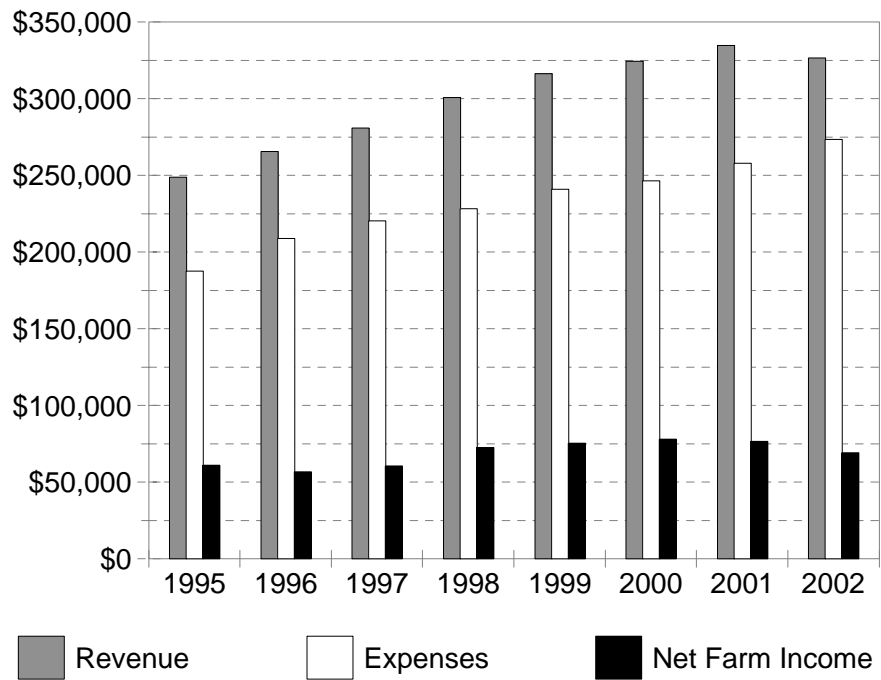


Ontario Dairy Summary 2002

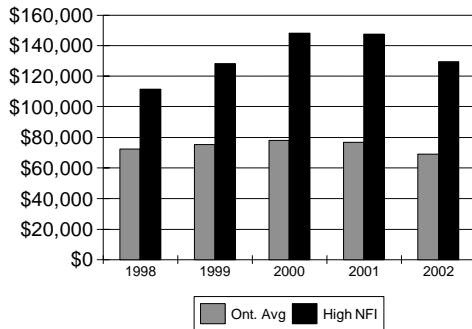


SUMMARY OF ONTARIO DAIRY FARMS

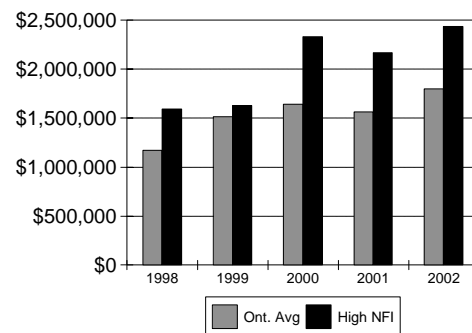
5 Year Summary

	Years:	1998	1999	2000	2001	2002
Farm Income Statement						
Total Cash Revenue		\$291,824	\$303,827	\$312,653	\$324,366	\$326,509
Total Farm Revenue		300,703	316,346	324,346	334,669	342,501
Total Cash Expenses		\$199,915	\$209,787	\$214,879	\$224,495	\$236,647
Change in Current Payables		-548	-1,019	513	-382	1,704
Depreciation		28,764	32,208	30,969	34,325	35,449
Total Farm Expenses		228,133	240,962	246,354	258,013	273,423
NET FARM INCOME		\$72,570	\$75,384	\$77,992	\$76,656	\$69,078

Income



Equity



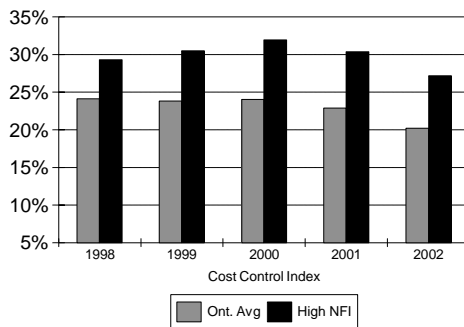
Farm Balance Sheet (Year End)

Total Assets	\$1,532,537	\$1,897,103	\$2,031,925	\$1,933,641	\$2,178,378
Total Liabilities	362,063	383,975	389,181	371,366	380,165
Equity in Farm Business	\$1,170,474	\$1,513,128	\$1,642,744	\$1,562,275	\$1,798,213
Percent Equity	76.4%	79.8%	80.8%	80.8%	82.6%
Net Capital Purchases (-Sales)	73,087	74,487	88,710	90,362	80,426
Net Withdrawals (-Contributions)	36,460	36,441	38,329	42,130	43,179

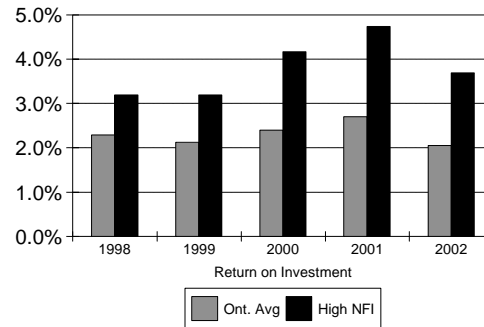
Farm Business Analysis Section

	1998	1999	2000	2001	2002
Return on Investment	2.3%	2.1%	2.4%	2.7%	2.1%
Capital Turnover VFP (years)	6.0	7.0	7.3	6.8	7.5
Cost Control Index	24.1%	23.8%	24.0%	22.9%	20.2%
Current Ratio :1	1.1	0.8	0.7	0.7	0.6
Working Capital	\$5,090	-\$17,680	-\$34,645	-\$27,720	-\$63,588
Debt Servicing Capacity	\$49,858	\$49,666	\$53,491	\$50,016	\$36,963
Term & Operating Interest Paid	\$23,614	\$24,734	\$25,804	\$26,673	\$25,687

Cost Control



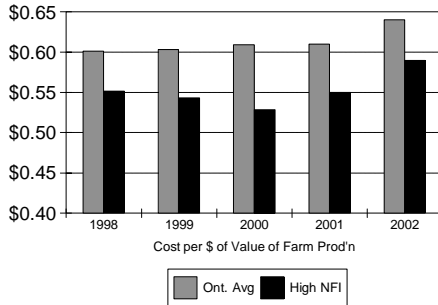
R.O.I.



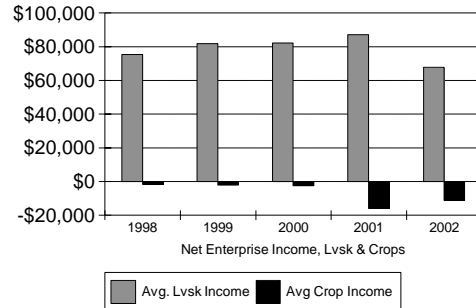
SUMMARY OF ONTARIO DAIRY FARMS 5 Year Summary

Value of Farm Production Analysis	1998	1999	2000	2001	2002
Cost per Dollar of VFP	\$0.60	\$0.60	\$0.61	\$0.61	\$0.64
Value of Farm Production	\$254,377	\$271,122	\$278,690	\$285,608	\$292,121
(Adj Op. Cost - Int.)/VFP	50.9%	51.2%	51.6%	51.8%	55.4%
Depreciation / VFP	11.3%	11.9%	11.1%	12.0%	12.1%
Interest / VFP	9.3%	9.1%	9.3%	9.3%	8.8%
Net Farm Income / VFP	28.5%	27.8%	28.0%	26.8%	23.6%

Cost Per Dollar



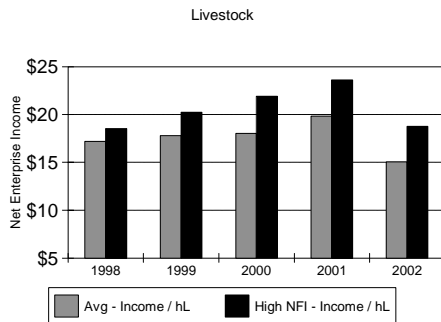
Livestock & Crop Income



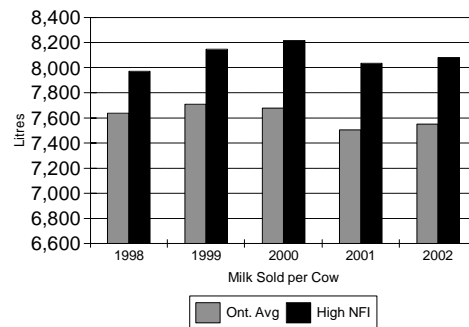
Crop Enterprise Report

Tillable Acres	295	298	280	316	316
Debt per Tillable Acre	\$1,228	\$1,289	\$1,390	\$1,176	\$1,199
Machinery & Equip Repair / Acre	\$31.62	\$36.49	\$38.53	\$33.93	\$34.02
Val Of Enterprise Production / Acre	\$245.90	\$249.50	\$265.60	\$240.66	\$271.72
Variable Expenses / Acre	165.70	167.10	174.50	178.10	190.31
Depreciation / Acre	53.90	58.60	65.70	66.87	68.36
Fixed Expenses / Acre	86.30	90.00	100.00	113.63	117.02
Net Enterprise Income / Acre	-6.10	-7.60	-8.90	-51.07	-35.62
Total Crop Enterprise Income	-\$1,798	-\$2,263	-\$2,491	-\$16,138	-\$11,267

Enterprise Income



Production



Livestock Enterprise Report

Value of Enterprise Prod'n / hL	\$62.16	\$62.77	\$65.04	\$68.21	\$66.02
Feed Cost / hL	21.43	20.70	20.94	22.10	23.69
Variable Expenses / hL	37.11	36.91	38.96	40.83	43.44
Depreciation / hL	2.92	2.90	2.76	2.99	3.06
Fixed Expenses / hL	7.87	8.05	8.05	7.55	7.55
Net Enterprise Income / hL	17.18	17.81	18.03	19.84	15.03
Total Livestock Enterprise Income	\$75,321	\$81,667	\$82,211	\$87,108	\$67,734
Average Number of Cows	57.4	59.5	59.4	58.5	59.7
Litres of Milk Sold	438,370	458,590	456,050	439,050	450,780
Milk Sold Per Cow	7,637	7,707	7,678	7,505	7,551
Avg Cows Per Person (Farm)	26.1	25.9	25.8	26.6	27.1
Value of Ent. Prod'n / Cow	\$4,747	\$4,838	\$4,993	\$5,120	\$4,985
Net Enterprise Income / Cow	\$1,312	\$1,373	\$1,384	\$1,489	\$1,135

SUMMARY OF ONTARIO DAIRY FARMS

FARM INCOME STATEMENT

REVENUE	Low 56 Farms	Avg 169 Farms	High 56 Farms
Product sales-milk,subsidy	187,193	270,551	363,993
Market & Feeder Livestock	4,533	6,240	5,250
Breeding stock	11,493	12,878	15,895
Cull stock	6,669	10,435	14,628
Other livestock	30	1,992	5,964
Crop sales	12,626	17,947	25,880
Custom work	889	1,348	2,357
Other Farm Revenue	4,517	5,118	6,048
TOTAL CASH REVENUE	\$227,950	\$326,509	\$440,015
Change in Accounts Receivable	3,472	9,594	17,807
Changes in Inventory	-5,039	6,398	17,108
TOTAL FARM REVENUE	\$226,383	\$342,501	\$474,930
EXPENSES			
VARIABLE EXPENSES			
Livestock - Purchased Livestock	7,386	4,252	2,395
Pur.Feed-Conc., Grain & Forage	34,998	46,128	55,342
Animal Health & Breeding	9,301	12,164	14,508
Other (Lvsk Stabztn, Barn Sppls)	7,113	9,335	11,154
Crop Inputs - Seed & Plants	4,285	6,124	9,384
Fertilizer & Lime	5,109	7,314	10,488
Pesticides & Other Chemicals	1,865	2,840	4,403
Containers And Twine	812	1,103	1,340
Other (Stabztn, Insurance Etc.)	666	804	921
Marketing & Transportation Costs	12,560	18,285	24,628
Custom Work, Equipment Rent	6,984	8,674	10,760
Hired Labour	15,875	29,143	43,767
Machinery & Equipment- Fuel & Oil	6,957	8,160	10,320
Machinery & Equipment- Repairs	12,468	14,456	17,427
Motor Vehicle Expenses	2,863	3,271	3,411
Building, Fence Repairs	6,455	8,286	10,127
Heating Fuel	537	754	798
Electricity & Telephone	7,170	9,049	11,022
Accounting, Office Expenses	3,154	3,671	3,856
Interest (Operating)	2,425	2,951	3,379
Other Cash Operating Expenses	2,301	4,123	7,397
Change in Payables	2,481	1,704	3,486
TOTAL VARIABLE EXPENSES	\$153,765	\$202,591	\$260,313
CONTRIBUTION MARGIN	\$72,618	\$139,910	\$214,617
FIXED EXPENSES			
Property Taxes,Fire & Liab. Ins	7,977	9,492	11,478
Lease & Rent Payments	2,205	3,530	5,053
Interest (Term)	18,522	22,736	26,966
Change in Interest Arrears	0	0	0
Depreciation	29,667	35,449	42,214
TOTAL FIXED EXPENSES	58,371	71,207	85,711
TOTAL EXPENSES	212,136	273,798	346,024
- Less Personal Share of Expenses	-68	-375	-455
TOTAL FARM EXPENSES	\$212,068	\$273,423	\$345,569
NET FARM INCOME	\$14,315	\$69,078	\$129,361

SUMMARY OF ONTARIO DAIRY FARMS

FARM BALANCE SHEET

(Assets at Estimated Value)

FARM ASSETS	Low 56 Farms	Avg 169 Farms	High 56 Farms
Current Assets:			
Cash (On Hand And In Bank)	4,971	2,485	668
Accounts Receivable	14,671	20,291	28,765
Market & Feeder Livestock	7,842	5,547	3,691
Home-Grown Crops	27,539	47,508	71,738
Purchased Feed & Supplies	1,835	2,463	2,672
Other Current Assets	0	0	0
..Total Current Assets	\$56,858	\$78,294	\$107,534
Long Term Assets			
Breeding Livestock	116,065	163,133	215,777
Market Quota	720,512	1,010,161	1,335,130
Field Machinery	167,936	200,020	252,186
Barn Equipment	51,012	63,147	70,891
Farm Buildings	156,216	181,788	198,202
Land	260,690	454,880	681,071
Other Long Term Assets	40,970	26,955	18,269
..Total Long Term Assets	\$1,513,401	\$2,100,084	\$2,771,526
TOTAL FARM ASSETS	\$1,570,259	\$2,178,378	\$2,879,060
LIABILITIES			
Accounts Payable	17,558	13,545	12,664
Interest Arrears	0	0	0
Operating Credit	9,065	11,652	12,227
Current Portion Of Term Debt	80,519	116,685	156,205
..Total Current Liabilities	\$107,142	\$141,882	\$181,096
Term Debt	200,576	238,283	262,227
TOTAL FARM LIABILITIES	\$307,718	\$380,165	\$443,323
EQUITY IN FARM BUSINESS	\$1,262,541	\$1,798,213	\$2,435,737

MEASURES OF FINANCIAL STRENGTH

...from the balance sheet at year end

Percent Equity		80.40%	82.55%	84.60%
Working Capital		-\$50,284	-\$63,588	-\$73,562
Current Ratio	xx:1	0.53	0.55	0.59
Debt Structure		34.82%	37.32%	40.85%
Debt to Asset Ratio	xx:1	0.20	0.17	0.15
Debt to Equity Ratio	xx:1	0.24	0.21	0.18

SUMMARY OF ONTARIO DAIRY FARMS
FARM BUSINESS ANALYSIS SECTION

MEASURES OF PERFORMANCE EFFICIENCY	Low 56 Farms	Avg 169 Farms	High 56 Farms
Capital Turnover(years)	8.53	7.46	6.90
Value of Farm Production	\$183,999	\$292,121	\$417,193
Cost per dollar of VFP	\$0.76	\$0.64	\$0.59
Cost Control Index	6.3%	20.2%	27.2%

EXPENSES & NFI RELATIVE TO VFP

(Adj.Prod. Cst.- Int) / VFP	64.7%	55.4%	51.6%
Depreciation / VFP	16.1%	12.1%	10.1%
Interest / VFP	11.4%	8.8%	7.3%
Net Income / VFP	7.8%	23.6%	31.0%
Interest & Principal / V.F.P.	57.1%	42.2%	39.6%

MEASURES OF PROFITABILITY

Net Farm Income	\$14,315	\$69,078	\$129,361
Return on Total Assets	2.25%	4.35%	5.55%
Return to Equity	1.13%	3.84%	5.31%
Return on Investment (at \$36000 per person)	-0.87%	2.05%	3.69%
Return to Owners Labour (at 5.0% investment rate)	-\$43,251	-\$14,154	\$15,753

Person Equivalents for the Farm	1.8	2.2	2.7
--	-----	-----	-----

DEBT SERVICING CAPACITY ANALYSIS

Cash Revenue minus Cash Expenses	\$48,090	\$89,904	\$139,692
plus Interest Payment	20,947	25,687	30,345
plus Non-Farm Revenue	9,789	12,184	18,319
minus Owners Withdrawals & Income Tax	-49,605	-55,363	-70,026
Cash Avail. for Debt Serv. and Cap. Purc.	\$29,221	\$72,412	\$118,330
minus committed Interest & Principal *	-117,110	-173,356	-246,660
minus Reserve for Capital Purchases (Depreciation)	-29,667	-35,449	-42,214
Available After Reserve to Service Additional Debt	-\$117,556	-\$136,393	-\$170,544

PHYSICAL SUMMARY FOR THE DAIRY ENTERPRISE

Average Number of Cows	45.6	59.7	75.3
Total hectolitre Milk Sold	3,077	4,508	6,086
Milk Sold Per Cow (litres)	6,747	7,551	8,082
Milk Sold Per Person (Enterprise)	236,654	281,738	320,300
Milk Sold Per Person (Whole Farm)	170,917	204,900	225,396
Avg Cows/Person (Dairy Enterprise)	35.1	37.3	39.6
Average Somatic Cell Count	238,056	229,741	230,667
Calving Interval	13.87	13.60	13.39
Herd Turnover	27.8	29.2	30.9
Heifer Age at First Calving (Months)	25.82	25.64	25.01
Total Butterfat Sold (Kg)	12,167	17,867	24,266
Butterfat Sold per Cow (Kg)	265.1	290.2	314.7
Total Protein Sold (Kg)	10,884	15,281	19,574
Protein Sold per Cow (Kg)	222.5	241.2	258.5

SUMMARY OF ONTARIO DAIRY FARMS

DAIRY ENTERPRISE REPORT

(PER COW BASIS)

REVENUE	Low 56 Farms	Avg 169 Farms	High 56 Farms
Product Sales	\$4,105.11	\$4,531.88	\$4,833.90
Market Livestock	30.94	26.92	16.57
Feeder Livestock	34.39	19.75	16.37
Breeding Livestock	251.36	214.59	210.54
Cull Stock	146.25	173.58	192.01
Other Livestock Enterprise Sales	0.22	0.08	0.08
- Livestock Purchased	-156.73	-68.04	-28.94
+ Inventory Change	-35.39	57.84	79.97
+ Change in Receivables	-12.19	28.06	72.22
VALUE OF ENTERPRISE PRODUCTION	\$4,363.95	\$4,984.66	\$5,392.74
VARIABLE EXPENSES			
Livestock Expenses:			
Purchased feed & grain	727.04	698.29	649.81
Purchased forages	5.96	4.49	3.29
Home-grown grains transferred	234.71	290.48	379.13
Home-grown forages transferred	826.62	795.24	794.75
Total Feed Cost	\$1,794.34	\$1,788.50	\$1,826.99
Animal Health & Breeding	203.97	203.42	192.01
Other (Stabilization, Supplies)	143.09	145.56	145.47
Marketing, Transportation	263.95	298.71	320.00
Custom Work, Equipment Rent	49.32	44.74	39.07
Hired Labour	225.55	320.05	372.42
Machinery & Equip.- Fuel & Oil	47.52	43.18	39.83
Machinery & Equipment- Repair	68.11	60.72	54.28
Motor Vehicle Expenses	25.07	22.50	18.92
Building, Fence Repairs	121.16	116.21	114.44
Heating Fuel	2.70	3.27	2.79
Electricity & Telephone	120.68	118.32	115.03
Accounting, Office Expenses	44.78	39.58	32.23
Interest - Operating	18.66	17.07	15.88
Other Cash Variable Expenses	32.83	29.51	26.12
Change in Payables	54.41	28.54	46.29
TOTAL VARIABLE EXPENSES	\$3,216.14	\$3,279.89	\$3,361.77
CONTRIBUTION MARGIN	\$1,147.81	\$1,704.77	\$2,030.97
FIXED EXPENSES			
Property Taxes, Fire & Liab. Ins	119.76	107.14	101.98
Lease & Rent Payments	9.93	10.00	10.49
Interest - Term	242.83	222.35	202.54
Depreciation	248.05	230.70	199.39
TOTAL FIXED EXPENSES	620.57	570.18	514.40
TOTAL ENTERPRISE EXPENSES	\$3,836.71	\$3,850.08	\$3,876.16
NET ENTERPRISE INCOME	\$527.24	\$1,134.58	\$1,516.57

SUMMARY OF ONTARIO DAIRY FARMS

DAIRY ENTERPRISE REPORT

(PER HECTOLITRE BASIS)

REVENUE	Low 56 Farms	Avg 169 Farms	High 56 Farms
Product Sales	\$60.85	\$60.02	\$59.81
Market Livestock	0.46	0.36	0.21
Feeder Livestock	0.51	0.26	0.20
Breeding Livestock	3.73	2.84	2.61
Cull Stock	2.17	2.30	2.38
Other Livestock Enterprise Sales	0.00	0.00	0.00
- Livestock Purchased	-2.32	-0.90	-0.36
+ Inventory Change	-0.52	0.77	0.99
+ Change in Receivables	-0.18	0.37	0.89
VALUE OF ENTERPRISE PRODUCTION	\$64.68	\$66.02	\$66.73
VARIABLE EXPENSES			
Livestock Expenses:			
Purchased feed & grain	10.78	9.25	8.04
Purchased forages	0.09	0.06	0.04
Home-grown grains transferred	3.48	3.85	4.69
Home-grown forages transferred	12.25	10.53	9.83
Total Feed Cost	\$26.60	\$23.69	\$22.61
Animal Health & Breeding	3.02	2.69	2.38
Other (Stabilization, Supplies)	2.12	1.93	1.80
Marketing, Transportation	3.91	3.96	3.96
Custom Work, Equipment Rent	0.73	0.59	0.48
Hired Labour	3.34	4.24	4.61
Machinery & Equip.- Fuel & Oil	0.70	0.57	0.49
Machinery & Equipment- Repair	1.01	0.80	0.67
Motor Vehicle Expenses	0.37	0.30	0.23
Building, Fence Repairs	1.80	1.54	1.42
Heating Fuel	0.04	0.04	0.03
Electricity & Telephone	1.79	1.57	1.42
Accounting, Office Expenses	0.66	0.52	0.40
Interest - Operating	0.28	0.23	0.20
Other Cash Variable Expenses	0.49	0.39	0.32
Change in Payables	0.81	0.38	0.57
TOTAL VARIABLE EXPENSES	\$47.67	\$43.44	\$41.60
CONTRIBUTION MARGIN	\$17.01	\$22.58	\$25.13
FIXED EXPENSES			
Property Taxes, Fire & Liab. Ins	1.78	1.42	1.26
Lease & Rent Payments	0.15	0.13	0.13
Interest - Term	3.60	2.94	2.51
Depreciation	3.68	3.06	2.47
TOTAL FIXED EXPENSES	9.20	7.55	6.36
TOTAL ENTERPRISE EXPENSES	\$56.87	\$50.99	\$47.96
NET ENTERPRISE INCOME	\$7.81	\$15.03	\$18.76

SUMMARY OF ONTARIO DAIRY FARMS

DAIRY ENTERPRISE REPORT

(PER KILOGRAM BUTTERFAT BASIS)

REVENUE	Low 56 Farms	Avg 169 Farms	High 56 Farms
Product Sales	\$15.66	\$15.51	\$15.56
Market Livestock	0.12	0.09	0.05
Feeder Livestock	0.13	0.07	0.05
Breeding Livestock	0.96	0.73	0.68
Cull Stock	0.56	0.59	0.62
Other Livestock Enterprise Sales	0.00	0.00	0.00
- Livestock Purchased	-0.60	-0.23	-0.09
+ Inventory Change	-0.14	0.20	0.26
+ Change in Receivables	-0.05	0.10	0.23
VALUE OF ENTERPRISE PRODUCTION	\$16.65	\$17.06	\$17.35
VARIABLE EXPENSES			
Livestock Expenses:			
Purchased feed & grain	2.77	2.39	2.09
Purchased forages	0.02	0.02	0.01
Home-grown grains transferred	0.90	0.99	1.22
Home-grown forages transferred	3.15	2.72	2.56
Total Feed Cost	\$6.85	\$6.12	\$5.88
Animal Health & Breeding	0.78	0.70	0.62
Other (Stabilization, Supplies)	0.55	0.50	0.47
Marketing, Transportation	1.01	1.02	1.03
Custom Work, Equipment Rent	0.19	0.15	0.13
Hired Labour	0.86	1.10	1.20
Machinery & Equip.- Fuel & Oil	0.18	0.15	0.13
Machinery & Equipment- Repair	0.26	0.21	0.17
Motor Vehicle Expenses	0.10	0.08	0.06
Building, Fence Repairs	0.46	0.40	0.37
Heating Fuel	0.01	0.01	0.01
Electricity & Telephone	0.46	0.40	0.37
Accounting, Office Expenses	0.17	0.14	0.10
Interest - Operating	0.07	0.06	0.05
Other Cash Variable Expenses	0.13	0.10	0.08
Change in Payables	0.21	0.10	0.15
TOTAL VARIABLE EXPENSES	\$12.27	\$11.23	\$10.82
CONTRIBUTION MARGIN	\$4.38	\$5.83	\$6.54
FIXED EXPENSES			
Property Taxes, Fire & Liab. Ins	0.46	0.37	0.33
Lease & Rent Payments	0.04	0.03	0.03
Interest - Term	0.93	0.76	0.65
Depreciation	0.95	0.79	0.64
TOTAL FIXED EXPENSES	2.37	1.95	1.66
TOTAL ENTERPRISE EXPENSES	\$14.64	\$13.18	\$12.47
NET ENTERPRISE INCOME	\$2.01	\$3.88	\$4.88

SUMMARY OF ONTARIO DAIRY FARMS

CROP ENTERPRISE REPORT

(PER TILLABLE ACRE BASIS)

REVENUE	Low 56 Farms	Avg 169 Farms	High 56 Farms
Wheat	\$7.10	\$6.65	\$5.51
Spring Grains	5.36	6.12	5.49
Grain Corn	7.35	11.00	16.01
Soybeans	10.27	11.13	12.43
Forage	6.71	6.34	8.02
Fruits	0.00	0.00	0.00
Vegetables	0.00	0.00	0.00
Homegrown Seed	0.15	1.49	3.54
Other Crop Sales & Custom Work	3.49	4.69	4.58
Crop Insurance	2.84	4.17	3.54
Crop Stabilization	3.54	5.18	7.51
Value grains fed to livestock	39.66	54.69	73.15
Value forages fed to livestock	141.45	151.20	155.27
+ Inventory change	-12.85	9.08	27.88
+ Change in receivables	0.00	0.00	0.00
VALUE OF ENTERPRISE PRODUCTION	\$215.07	\$271.72	\$322.92
EXPENSES			
VARIABLE EXPENSES			
Seed & Plants	15.88	19.31	24.04
Fertilizer & Lime	18.93	23.07	26.87
Pesticides & Other Chemicals	6.91	8.96	11.28
Containers And Twine	3.01	3.48	3.43
Other (Stabztn, Insurance Etc.)	2.47	2.54	2.36
Marketing & Transportation	1.94	1.27	1.00
Custom Work, Equipment Rent	17.55	18.86	19.84
Hired Labour	20.59	30.77	38.22
Machinery & Equip - Fuel & Oil	17.55	17.41	18.42
Machinery & Equipment- Repair	34.69	34.02	33.84
Motor Vehicle Expenses	6.38	5.94	5.00
Building, Fence Repairs	3.45	4.10	3.80
Heating Fuel	1.52	1.48	1.07
Electricity & Telephone	6.18	6.04	5.65
Accounting, Office Expenses	4.12	4.01	3.49
Interest (Operating)	5.83	6.03	5.43
Other Variable Cash Expenses	2.98	3.03	3.14
Change in Payables	0.00	0.00	0.00
TOTAL VARIABLE EXPENSES	\$169.95	\$190.31	\$206.89
CONTRIBUTION MARGIN	\$45.12	\$81.40	\$116.04
FIXED EXPENSES			
Property Taxes, Fire & Liab. Ins	9.33	9.70	9.59
Lease & Rent Payments	6.49	9.25	10.92
Interest (Term)	27.60	29.71	29.70
Depreciation	68.01	68.36	69.69
TOTAL FIXED EXPENSES	\$111.42	\$117.02	\$119.90
TOTAL EXPENSES	\$281.37	\$307.34	\$326.79
NET ENTERPRISE INCOME	-\$66.30	-\$35.62	-\$3.86

**SUMMARY OF ONTARIO DAIRY FARMS
CROPS GROWN AND FED REPORT
CROP ACRES AND YIELDS**

CROP	Low 56 Farms			Avg 169 Farms			High 56 Farms		
	Acres Grown	Total Yield	Yield per Acre	Acres Grown	Total Yield	Yield per Acre	Acres Grown	Total Yield	Yield per Acre
Wheat	8.1	12.9	1.5	8.8	13.2	1.5	11.5	16.8	1.5
Spring grains	46.9	49.6	1.2	56.0	65.9	1.2	70.2	85.0	1.2
Grain corn	12.1	31.2	3.0	23.7	77.4	3.0	46.3	161.3	3.0
Soybeans	8.7	8.8	1.1	13.4	13.1	1.1	21.9	22.5	1.1
Straw	xxx.x	12.6		xxx.x	25.9		xxx.x	43.8	
Other 1	1.9	3.6	1.9	4.3	7.3	1.7	2.9	2.6	0.9
Other 2	0.7	0.8	1.1	4.9	13.3	2.7	5.5	17.6	3.2
Corn silage	10.8	126.0	12.1	18.9	233.0	12.1	29.8	386.0	12.1
Hay	150.9	181.6	2.3	164.6	177.0	2.3	186.1	195.0	2.3
Haylage	xxx.x	336.3		xxx.x	482.0		xxx.x	643.5	
Tillable pasture	27.2			21.7			16.2		
Rough pasture	22.0			31.1			38.9		
Non Crop Land	100.6			82.8			81.9		
Total Acres	389.9			430.2			511.2		
Tillable Acres reported	269.9			317.1			390.3		
Calculated Tillable Acres	267.3			316.3			390.4		

TOTAL FEED FED AND FEED ALLOCATED TO THE LIVESTOCK ENTERPRISE

	Total Fed	Feed Cost	Cost per Cow	Total Fed	Feed Cost	Cost per Cow	Total Fed	Feed Cost	Cost per Cow
Wheat	7	1,056	23	3	416	7	0	32	0
Spring grains	44	5,475	120	59	7,325	123	81	10,163	135
Grain corn	26	3,570	78	62	8,624	144	123	17,150	228
Soybeans	1	308	7	2	672	11	4	1,204	16
Straw	17	1,197	26	26	1,841	31	35	2,457	33
Other Crop	3	294	6	3	305	5	0	0	0
Other Crop	2	114	3	12	732	12	14	858	11
Corn silage	128	4,224	93	204	6,732	113	330	10,890	145
Hay	161	14,526	319	156	14,067	236	163	14,643	194
Haylage	362	16,277	357	502	22,572	378	652	29,340	390
Tillable pasture	18	1,104	24	16	942	16	13	804	11
Rough pasture	10	253	6	24	590	10	34	853	11
Total		48,397	1,061		64,818	1,086		88,393	1,174

CROP AND LIVESTOCK ENTERPRISE INVESTMENT

Allocated Investment From the Balance Sheet (Year End Values)	Crops per Acre	Lvsk per Cow	Crops per Acre	Lvsk per Cow	Crops per Acre	Lvsk per Cow
	Home Grown Crops & Supplies	102	0	150	0	184
Feeder & Market Livestock		172		93		49
Breeding Stock		2,545		2,731		2,866
Market quota	0	15,801	0	16,921	0	17,731
Machinery & Equipment	622	1,119	631	1,058	646	941
Land & Farm buildings	1,082	2,741	1,549	2,436	1,847	2,106
Enterprise Assets/Unit	1,806	22,699	2,330	23,579	2,676	24,075
Total Enterprise Assets	487408	1035075	738766	1407639	1044635	1812815
Debt per Acre & per Cow	1,140	6,748	1,199	6,368	1,136	5,887